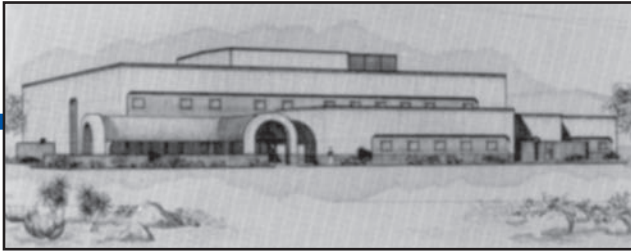


"Serving Tucson & Southern Arizona since 1947"



NEWS FROM *Square & Compass* CHILDREN'S CLINIC

2600 N. WYATT (520) 324-3864 TUCSON, ARIZONA 85712-6106

"Our only source of funds is donations and bequests"

VOLUME 23, NO. 1

SPRING 2013



Silhouettes



Diego – To the Beat of His Own Drum

Families today face a number of challenges and none more so than those with children with complex health care needs. These challenges are just a little easier to handle and overcome when families have a strong and extensive support system. Families that confront complex health care needs on a daily basis, can greatly benefit from a comprehensive care team under one roof, as is found at the Square & Compass Building. For Diego's family, these resources have included a cardiologist, a gastroenterologist, social workers, a physical therapist, and Square & Compass Children's Clinic, to name a few.



Diego was born with Pulmonary Attrition which required four heart surgeries before he was three years old, the first of which was performed when Diego was just one day old. At that point, he became a patient of Dr. Klewer and remains so still today. This was just the beginning of Diego's journey with a support team that cares about his health and well-being. In 2010, Diego experienced a stroke that required months of extensive physical therapy administered by Children's Clinics' Physical Therapist, Danyle Tutone. And most recently, Diego has come under the care of Dr. Ghishan to stabilize a condition causing protein loss.

Diego is a bright 15 year old who likes everything about being a Freshman at Sunnyside High School. He has an infectious smile and fun-loving personality. Like many high school students, he enjoys playing video games, baseball, and soccer, but he loves music. Diego recently began playing guitar, has played drums since he was in the 5th grade and hopes to play the snare drum for the high school band next year. The

Continued on page 2

Building Blocks of Communication

The ability to effectively communicate is vital to all people. Effective communication allows us to interact with friends and family, to learn about the world around us, to express our feelings and needs, and is a fundamental component to our physical and psychological well-being. When methods of communication are hindered by a diagnosis such as Autism, Cerebral Palsy, Cleft Lip or Palate, Spina Bifida, developmental disabilities, or a traumatic brain in-

jury it may be necessary to seek the treatment of a Speech Language Pathologist.

Jennifer Allen, SLP has been a Speech Language Pathologist for Children's Clinics for nearly 20 years and understands the importance of helping a child communicate effectively to meet their everyday needs. The nature and severity of a child's diagnosis dictates the method of treatment and tools used to build their individual communication skills. Tools used in the treatment of speech and language disorders include a wide range of items such as pictures, toys, foods, and even special cups and bottle nipples when a child has swallowing disorders, as well. Employing the appropriate tool helps eliminate the stress of communicating and allows the child to concentrate their energy on learning the skills being taught, as well as, making the experience fun and interesting.

The continued success of a child's communication skills is a team effort. With the assistance of a Speech Language Pathologist, a program of treatment is created for each child that instructs parents and educators how to contribute and continue to work with the child to improve their communication skills between therapy sessions. The Speech Language Pathologist will help set goals for the child, monitor their progress at home, and teach parents methods of "play" that will enhance their child's success in communicating and thereby improve their overall well-being.

Speech Language Pathology is an essential component of the comprehensive care and treatment of children provided by Children's Clinics with the support of Square & Compass Children's Clinic.



Diego – To the Beat of His Own Drum Continued from page 1

high school is working with Diego and his family to make this happen by providing a modified school schedule that accommodates his numerous doctor appointments and health care needs. With the support of Diego's high school and teachers, he will be able to succeed in his academics and pursue his interest in, one day, becoming a Border Patrol Agent.

Along the way, Diego's parents have been faced with the daunting challenge of obtaining and keeping health care coverage for a child with a complex heart condition. Many insurance companies won't cover children with Diego's diagnosis and those that will are cost prohibitive for a family of four. Diego is currently not covered by insurance and his father, who is employed by a mining company, makes too much for them to qualify for AHCCCS or KidsCare.

Diego's mom, Reyna, with the help of Children's Clinics' social workers, has sought out programs and resources that help their family provide the essential health care items, that Diego needs every day, but that they find difficult to afford.

Unfortunately, this is the case for many hard working families with children with complex health care needs. Square & Compass Children's Clinic helps fill that gap and provides funding for much needed health care items such as prescriptions, medical tests, and devices required for kids with complex medical conditions to live a happy, healthy life. Donations made to Square & Compass Children's Clinic go directly towards helping kids like Diego and, in turn, help lessen the burden on families that face these complicated issues every day.

Rehab Gets Some Therapy



The Rehab Department of our partner, Children's Clinics, is a vital component to comprehensive medical care taking place here in the Square & Compass Building. Many children who receive care for various diagnoses throughout the clinic, also need some sort of rehabilitation therapy. Children's Clinics Rehab Department includes Physical Therapy, Occupational Therapy, Audiology, Speech Therapy, and a Feeding Clinic.

When the first floor was renovated in 2010, the Rehab Department did not get a facelift at that time. There are many unique features that make up a comprehensive Rehab facility and those needed to be addressed in a separate project. This project finally came to fruition last Fall. To complete the first floor renovations, the Rehab Department underwent significant improvements to bring it up to date and make it more efficient. Some of the new additions include reconfigured rehab gym spaces and a separate observation room, niches in the hall walls that aid in therapy sessions, a mobility aid "garage" (as seen in the picture of Diego on the front page of this issue), more efficient storage and office space, a feeding clinic room complete with a dishwasher and microwave, and wall graphics that are not only decorative, but are used to engage children during their therapy appointments.

This long awaited renovation of the Rehab Department completes the improvements on the first floor of the Square & Compass Building and greatly enhances the comprehensive care children receive every day in the clinic.



Thank You!

As supporters of Square & Compass Children's Clinic **you** play a significant role in improving the health and lives of **thousands** of children.

In 2012, there were over **23,000** patient visits in the following clinics:

Audiology
Cardiology
Cerebral Palsy
Dental
Endocrinology
Ear, Nose, & Throat
Feeding
Gastroenterology
Genetics
Myelomeningocele
Nephrology
Neuro-surgery
Neuro-epilepsy
Neurocutaneous
Neurology
Neuromuscular
Nutrition
Occupational Therapy
Ophthalmology
Oral-Maxillary
Orofacial
Orthodontia
Orthopaedics
Palate Surgery
Pediatric Surgery
Physical Medicine
Physical Therapy
Plastic Surgery
Primary Care
Rheumatology
Scoliosis
Sickle Cell
Spasticity
Speech Therapy
Upper Extremity
Urology
Wheelchair

In addition, we support Children's Clinics' ancillary services for patients and their families:

Child Life Specialist
Educational Support
Nutritionist
On-site Radiology & Lab
Patient & Family Services
Pet Therapy
Psychology
RN Coordinators

A Message From The Executive Director

Dear Friends,

With your generous support we have created a Sustainability Plan that will carry us long into the future, helping medically challenged children in a facility that is welcoming, as well as, functional. We have extended our property lease with the Tucson Medical Center to the year 2045, installed solar hot water and solar electric systems, improved our water-using elements throughout the building, and we are confident in the growth of our investments.

We are not resting on our laurels, we receive requests daily from patients in need and continue to rely on your contributions to provide aid for children for the long term, continuing to fulfill the vision first seen in 1947.

In appreciation,
Bruce A. Rick
Executive Director

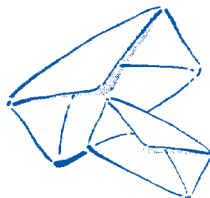
Square & Compass Children's Clinic, Inc. Officers and Directors

C.L. "Lou" Deibel	President
Van Elrod	Vice President
Samuel Stephenson	Secretary
Fred M. Lohman	Treasurer
Roger C. Biede, II, D.D.S.	Bob Richards
Craig Gross	Robin Settlemyer
James Lieber	James E. Wolfe
Bruce A. Rick	Executive Director
Ronald N. Allen	Legal Advisor
Jill Bemis	Children's Clinics CEO
C.E. "Gene" Hamilton	Emeritus
Joseph "Ted" Shirley	Emeritus

Comments, Questions, Suggestions?

We would love to hear from you. Our address is:

Square & Compass Children's Clinic
2600 N. Wyatt Drive
Tucson, AZ 85712-6106



You can also e-mail us at:

secretary@squareandcompassclinic.com

See us at our website www.squareandcompassclinic.com

Silhouettes is published three times a year by Square & Compass Children's Clinic, Inc.
Amy Burke - Editor Printed by Allegra Marketing, Print, Mail - Park & 22nd